

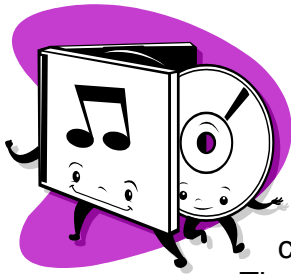
# Templefield Lower School

## Newsletter

May 20<sup>th</sup> 2008

Dear Parents,

It hardly seems possible that we are already at half term; time certainly does fly! A great deal has been achieved over the last few weeks with a successful Victorian Day in Year 1, class assemblies and a wide range of curriculum and sporting achievements. The second half of term also promises to be extremely busy with lots of exciting activities planned for the children



### My School Musical

Over the last few weeks the children have been preparing for a very special event. On Thursday 22<sup>nd</sup> May we have a recording company coming into school to record the children.

They will sing together as a class, a year group and also a whole school.

Order forms to purchase the CD will be sent out after half term, the price for the CD will be £8.50. Commission raised from sales will go towards the music department.

### Kidzgym

There are a couple of spaces available for the Kidzgym which takes place on a Tuesday after school 3.30 – 4.30 for children in Y1 & Y2. If interested please call in at the school office to collect an enrolment form. Many thanks

### Dinner Money

Dinner money for half term 2<sup>nd</sup> June – 18<sup>th</sup> July (33 days) will be £52.80.

£8 per week, Fridays only = £9.60 (6 Fridays) except Year 4 £8 due to transfer day Friday 4<sup>th</sup> July. If you are paying weekly please ensure payment is made at the beginning of the week. Cheques payable to: Eden Foodservice (cheque guarantee card number, expiry date and address on the back of the cheque please) we cannot accept cheques without details on the back of the cheque (Edens policy). Many thanks

As always if you have any concerns regarding your child please do not hesitate in contacting your child's class teacher in the first instance.

Wishing you all a restful half term,

Yours sincerely

Lynne Birch

Along with this letter you should also receive a copy of the school diary for the coming half term.



INVESTOR IN PEOPLE